

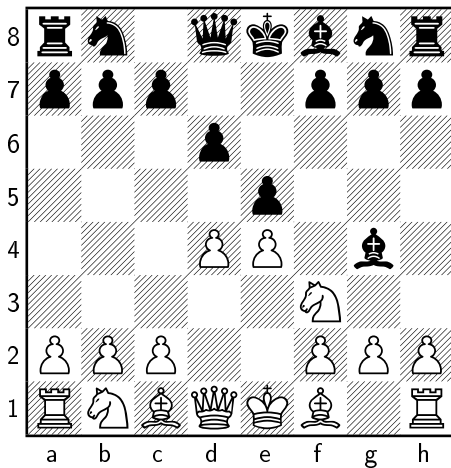
Chess game

# Me vs Pretty Law

March, 2016

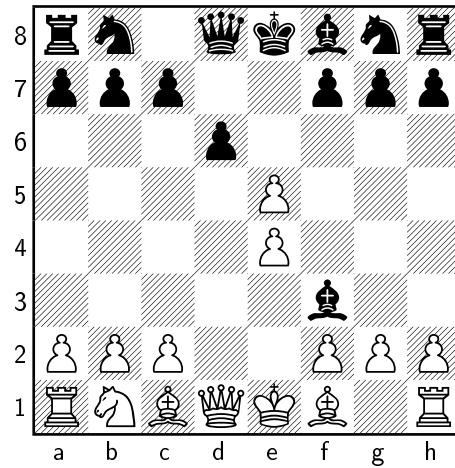
This game was played on chess.com with time control set as 1 in 14 days. I won by resignation. My estimated ELO was 1407, hers was 1580. She's the highest rated player I've played with (so far), thus I was very careful and avoided experimentations.

1	e4	e5
2	♘f3	d6
3	d4	♗g4



Black throws her bishop beyond the enemy line, suggesting the possibility of an exchange with the white knight and in the same time pinning it because of ... ♗xd1.

4	dxe5	♗xf3
---	------	------

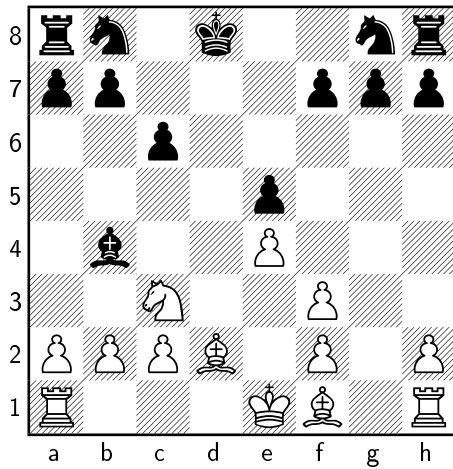


I thought to 4... dxe5 5 ♖xd8+ ♙xd8 6 ♘c3, but as suspected she wanted to exchange her bishop with the knight first.

5	gxf3	dxe5
6	♖xd8+	♙xd8
7	♘c3	

It just happened a little bit later... and we are both late in developing the woods; I have the queen-side knight out and pawns in the same file, she can't castle anymore. Let's see what happens next.

7	...	♗b4
8	♗d2	c6

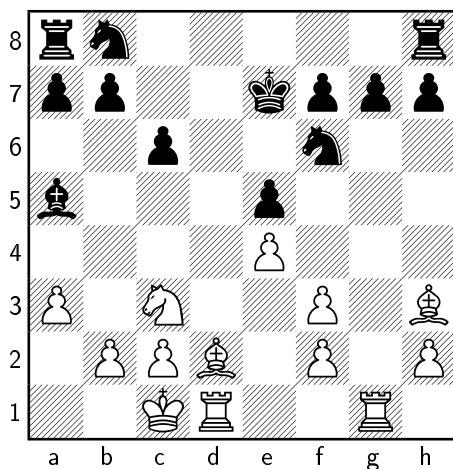


She again pins my knight, hence I make it free moving the bishop and preparing for the castle. She takes control of b5 and d5, likely to avoid  $\text{♞b5}$  or  $\text{♞d5}$ .

9 O-O-O

Now 9 O-O-O  $\text{♞xc3}$  10  $\text{♞xc3+}$  and then I can do  $\text{♞xe5}$ . The bishop has now a great power.

9 ...  $\text{♞e7}$   
 10  $\text{♞h3}$   $\text{♞f6}$   
 11 a3  $\text{♞a5}$   
 12  $\text{♞hg1}$

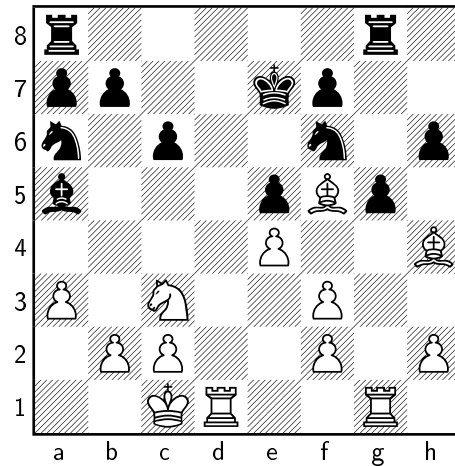


It seems to me to have a good position: the files d and g are under the control of my rooks. She's a step back developing her pieces (her knight still block her queen-side rook), I threat  $\text{♞xg7}$  and also b4 is an option.

12 ...  $\text{♞g8}$   
 13  $\text{♞g5}$

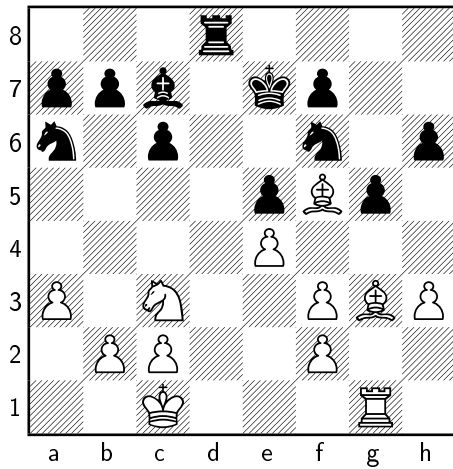
Should I have tried 13  $\text{♞xf6+ ♞xf6}$ ? Of course I was looking for  $\text{♞d7+}$  which was not an option until there is the knight defending the d7-square.

13 ... h6  
 14  $\text{♞h4}$  g5  
 15  $\text{♞f5}$   $\text{♞a6}$



Maybe my bishop was not in danger because she didn't like 15...  $\text{g×h4}$  16  $\text{♞xg8 ♞xg8}$ , which I was ready for, even if I'd have been down by one bishop — it seemed to me I could attack the king easily.

16  $\text{♞g3}$   $\text{♞c7}$   
 17 h3  $\text{♞ad8}$   
 18  $\text{♞xd8}$   $\text{♞xd8}$



I've left the knight in c3 undefended, but her bishop and knight are kept quite out of the game, despite ... ♖b6.

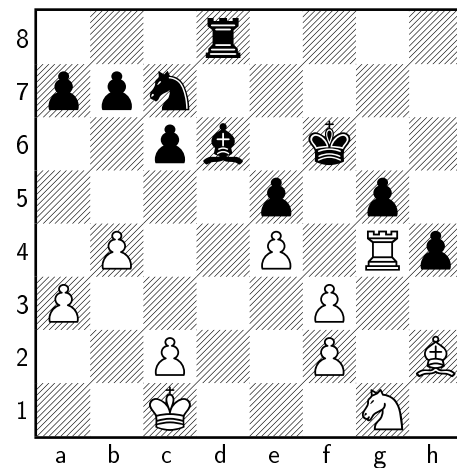
27 ... ♖d6  
 28 ♗e2 h4  
 29 ♖g4

Here I wanted just to avoid ... g4, so I occupied that square with the rook: no prey in sight!

I accepted the exchange for obvious reasons, even if I gave the d-file. Her pawns have a better position and her e5-pawn is now defended. Maybe with h3 I've just taken time.

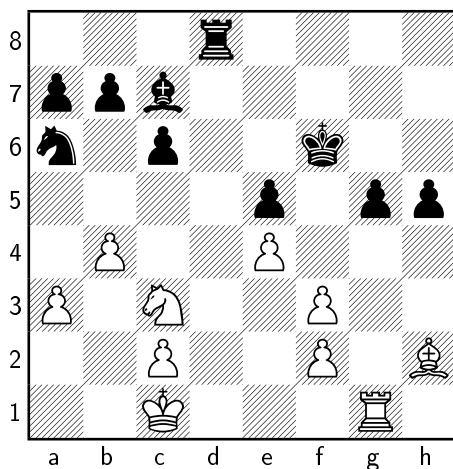
19 h4 ♗h5  
 20 ♖g4 ♗g7  
 21 ♖h1 h5  
 22 ♖h3 f6  
 23 ♖g1 ♗e6  
 24 ♖xe6 ♔xe6  
 25 h×g5 f×g5  
 26 ♖h2 ♔f6  
 27 b4

29 ... ♗c7  
 30 ♗g1



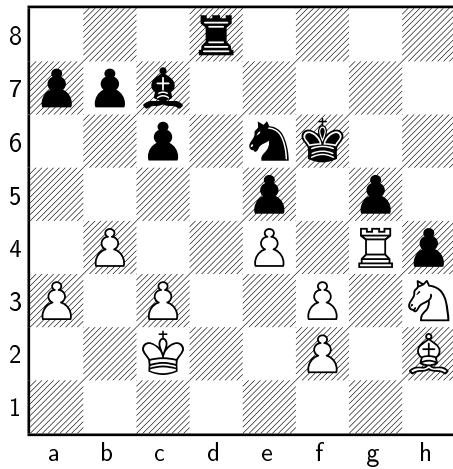
Then I am clearly looking at the g5-square.

30 ... ♗b5  
 31 ♔b2 ♗d4  
 32 c3 ♗e6



But I've just seconded the moves of her knight that now defends my target (g5).

33 ♗h3 ♖c7  
 34 ♔c2



She reopened the d-file; I didn't want her rook in d1-d3.

34 ... a5  
35 ♖g1?

I was looking forward for the moment when I could do **f3**, which means I did also **f4** before.

35 ... a×b4  
36 a×b4 b6  
37 f4

And here it is: I am ready for **f3**, that opens the diagonal.

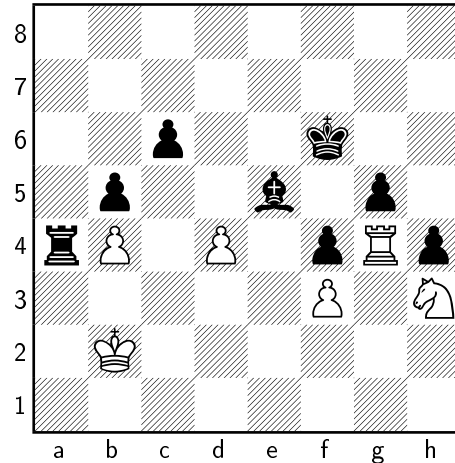
37 ... e×f4  
38 f3 ♖a8  
39 ♔b2

Again the king acts actively to avoid the rook in squares a1-a3, even if the pawn in b4 can be attacked.

39 ... b5  
40 ♖d4+ ♗×d4  
41 c×d4 ♖a4

I want to keep the initiative.

42 e5+ ♗×e5?

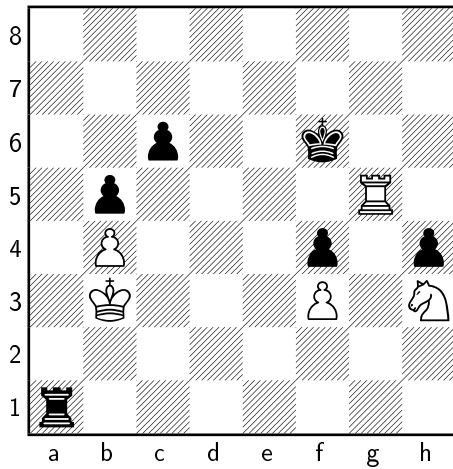


This sacrifice seems to me a mistake. This **42... ♗e6 43 ♗×g5+** is not good, nor **42... ♗f5 43 ♖×g5+** or **42... ♗g6 43 ♖×g5+** and similar. She can't avoid the capture of the pawn in g5. At least she can avoid the check, maybe with **42... ♗e7**. I can't see the reason for this sacrifice.

43 d×e5+ ♗×e5  
44 ♖×g5+

Of course, at last g5 was captured and now f4-pawn and h4-pawn are without hope.

44 ... ♗f6  
45 ♗b3 ♖a1



advantage. With ... ♔f5 things aren't better, maybe... As said, her pawns are without hope!

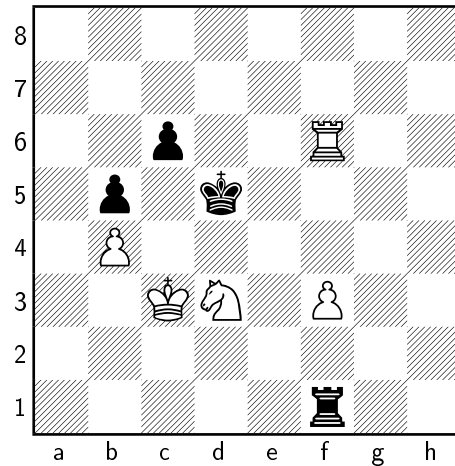
48 ... ♖f1  
 49 ♘d3+ ♔d5  
 50 ♖f4 ♖d1  
 51 ♔c3 ♖f1  
 52 ♖f6

To defend my b4-pawn I had to move the king, thus allowing her rook to maneuver in the first row. Anyway I have the mission to kill two of her pawns now...

46 ♖g4 ♖h1  
 47 ♖xh4

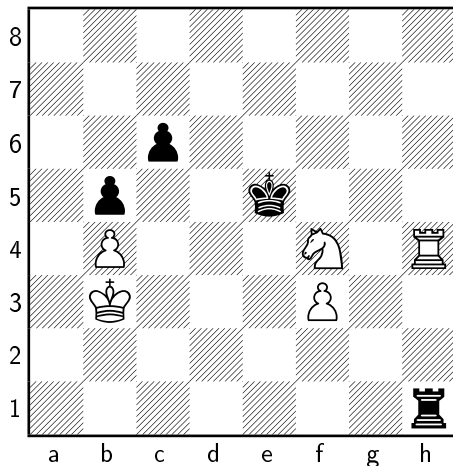
Have I caused my knight to be pinned? My rook can't abandon the h-file. Unless...

47 ... ♔e5?  
 48 ♘xf4



Black king can't move! So she tries to do something with her rook.

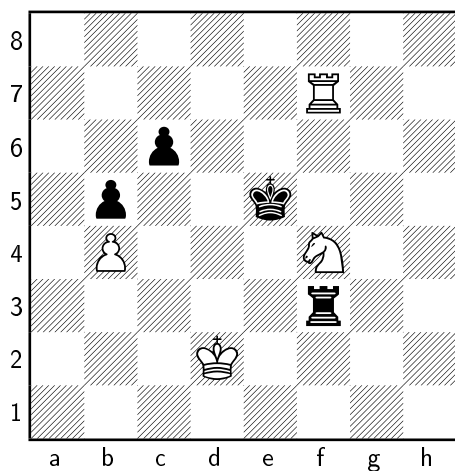
52 ... ♖a1  
 53 ♘f4+ ♔e5



A fork with a king?

She did another mistake. In fact 48 ♘xf4 ♖xh4 49 ♘g6+ and so I can capture the rook back and keep the knight as

54 ♖f7 ♖a3+  
 55 ♔d2 ♖xf3?

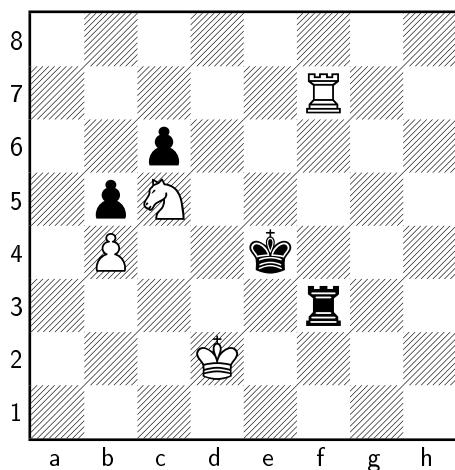


Another mistake, maybe a blunder. In fact I can check again.

56      ♖d3+   ♔e4

At this point, 56... ♜x d3 57 ♔x d3 gives me advantage and she has to hope in blunders to win. The move ... ♔e4 seemed the only hope to protect the rook. But she hasn't seen the following:

57      ♘c5+



No matter where she puts her king: the rook is lost. Therefore she **resigns**.